


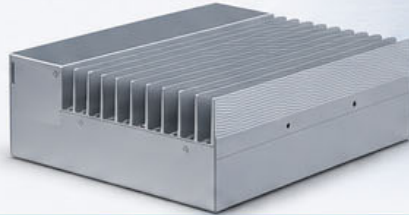
# IPM-15SE / IPM-17SE

**Industrial Edge Computer**  
**RUGGED. FANLESS. RELIABLE.**  
 Built for Industrial Edge Applications.

 **Operating Range (with Industrial SSD)**  
 -20°C to +60°C\*  
 0°C to +40°C (with HDD)

 **Dual 8K Display**  
 (7680 x 4320 @60Hz)

 **4x Intel LAN**  
 (3x i210-AT + 1x i219-LM)  
 vPro Support




## AT A GLANCE

 **CPU**  
 Intel® Core™  
 i5-1235U / i7-1255U  
 (10 Cores, 12 Threads)

 **Memory**  
 2x DDR5 4800  
 SODIMM,  
 up to 64GB

 **Network**  
 4x Intel LAN  
 (3x i210-AT + 1x i219-LM)  
 Gigabit Ethernet  
 (vPro Support)

 **Display**  
 2x DP  
 8K Dual Display  
 Support  
 (7680 x 4320 @60Hz)

 **Expansion**  
 1x M.2 2280 (NVMe/SATA)  
 1x Mini PCIe + 1x mSATA  
 Optional Nano-SIM

 **I/O**  
 4x USB 3.0  
 Optional 2x COM  
 RS232/485 Selectable  
 12-24V DC Power Input

 **OS Support**  
 Windows 10 / 11  
 Linux

## BUILT FOR INDUSTRY. DESIGNED FOR RELIABILITY.

 **Industrial Automation & Smart Manufacturing**

Ideal for automation control, IIoT gateway, and data acquisition in harsh industrial environments.

 **Network Security & Edge Computing**

Perfect for firewall, router, VPN, and edge servers with multiple Intel LAN and vPro support.

 **Smart City & IoT**

Optional Nano-SIM, wide voltage design and dual 8K display support intelligent transportation and digital signage.

 **Energy Management**

Operates at -20°C to +60°C\* with Industrial SSD. Ideal for offshore wind, solar monitoring, and remote energy data logging.

 **Transportation**

Compact and reliable solution for onboard systems, fleet management and surveillance applications.

 **Retail & Digital Signage**

Supports dual 8K display output for high-resolution signage, kiosks, and interactive applications.

## WHY CHOOSE IPM-15SE / IPM-17SE?

- ✓ All-aluminum, fanless & silent design for harsh environments
- ✓ Rich I/O and flexible expansion for future needs
- ✓ DIN-Rail / Wall mount for easy integration
- ✓ Global certifications: CE, FCC, RoHS | 2 Years Warranty

## INTERESTED IN MORE DETAILS OR PRICING? CONTACT US TODAY!

- ☎ TEL: +886-277087199
- ✉ Email: sales@ipotech.com.tw
- 🌐 <https://www.ipotech.com.tw/>



\* Performance may vary by system configuration and environment.